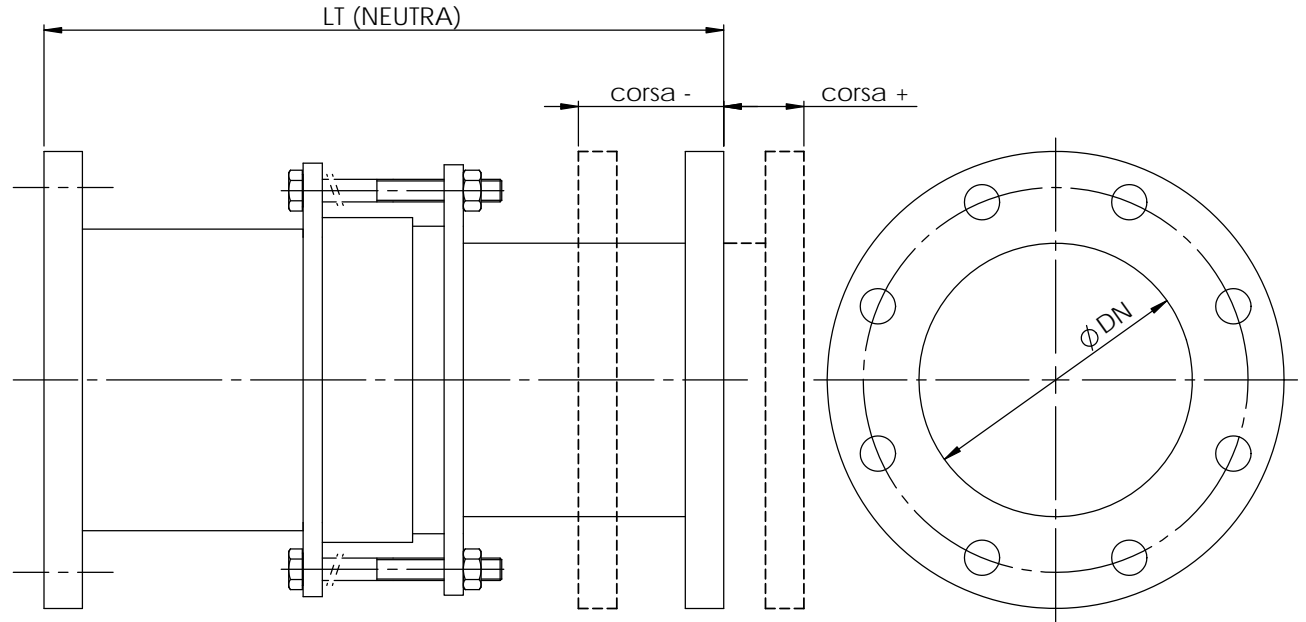


**DATI TECNICI / TECHNICAL DATA**

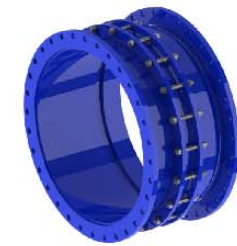
Corsa assiale standard : 250 mm (+/-125)  
 (altre corse disponibili su richiesta)  
 Pressione massima di esercizio : 16 bar@20°C  
 Temperatura max di esercizio : 180°C  
 (altre pressioni e temperature di esercizio su richiesta)

Materiali :  
 Corpo centrale e flange : Acciaio al carbonio  
 Tiranti e dadi : acciaio zincato  
 Guarnizioni : EPDM/NBR, fibre tessili  
 (su richiesta esecuzione totale in AISI304/316)  
 Finitura : Epossidica RAL 5005 (conforme D.M 174)



DN	PN	LT (mm)	corsa + (mm)	corsa - (mm)	note	Flange UNI-EN 1092
50	16	550	100	100	(1)	PN16
65	16	550	100	100	(1)	PN16
80	16	550	100	100	(1)	PN16
100	16	630	125	125	(1)	PN16
125	16	630	125	125	(1)	PN16
150	16	650	125	125	(1)	PN16
200	16	700	150	150	(1)(2)	PN10-16
250	16	700	150	150	(1)(2)	PN10-16
300	16	700	150	150	(1)(2)	PN10-16

altri diametri sino a DN 2000 vengono dimensionati su richiesta



Note :  
 (1)corse +/- maggiorabili su richiesta  
 (2)Tipo di flangia da specificare su richieste/ordini

Material:		This drawing and any information or descriptive material set out on it are the confidential and copyright property of TREVITEC © and MUST NOT BE DISCLOSED, COPIED, LOANED in whole or part or used for any purpose without the written permission of TREVITEC.		Description: Compensatore assiale tipo LTF	
Finish:		Document Type:		Drawn by:	
Unless Otherwise Stated: Linear Tol.: ±0.2, Angular Tol.: 0°15' Surface Finish: 0.8µm All Dimensions: mm		Company Confidential		Checked/Approved by:	
Drawing Scale: 1:1		Legal Owner: <b>TREVITEC</b> TREVITEC, via Zermanese 211/C 31100 TREVISO - IT www.trevitec.com		Checked/Approved Date:	
Approx Weight: Kg		Drawing Produced In Accordance With:		Part Number:	
Projection Method: THIRD ANGLE		Sheet Size: A3		Drawing Number: LTF-613040-01	
				Sheet: 1 of 1	
				Revision:	